



**siemon & salazar**

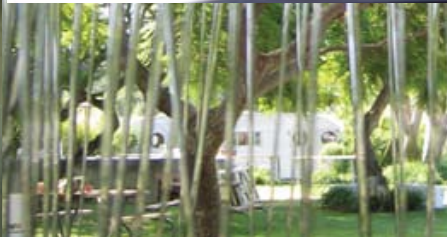
# the studio

Caleb Siemon founded his glass studio in 1999 in Costa Mesa, California. With the help of a group of friends, which included Carmen Salazar, he transformed an old auto body shop into an artists' enclave complete with a village of vintage trailers in the parking lot. An everchanging collection of visiting artists helped shape the physical design and the philosophy of the studio. During this time Caleb began to develop his signature style. Thick glass, swathes of color and superior craftsmanship became trademarks of his work.

In 2002, after four years, the studio outgrew its original home and moved to a facility in Santa Ana, California. Caleb upgraded to a highly efficient furnace which recycles the exhaust heat and cuts fuel consumption by a third. A great deal of thought and care is put into every piece and every part of the process. From the raw materials on up, the team is deliberate and painstaking every step of the way. Everything is made at the studio with lead-free crystal which gives the glass brilliance without toxicity.

In the new studio, Caleb's collection grew and his aesthetic solidified. Collectors and galleries around the world began to look to him for timeless design of the highest quality. Carmen officially rejoined the studio in 2008 after studying and working in the architectural field for six years. Together, Caleb & Carmen launched a lighting line. They translated some of Caleb's vessel designs into pendants, as well as created new lines together. Their fixtures are now featured in fine homes and commercial venues all over the globe. As their lines have expanded designers now look to the pair for home accessories and lighting for their most discerning clients.

---



siemon & salazar

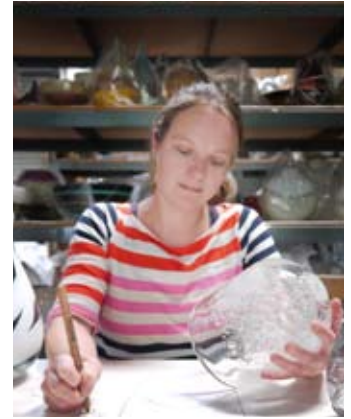
# caleb siemon



Most glassblowers aren't born artists," says Caleb Siemon. "They're born pyromaniacs." Son of a jeweler, he grew up making things with his hands, got hooked on glass in high school, and honed his craft at the Rhode Island School of Design. He then set out for Murano, Italy, with a backpack, a few words of Italian, and the hope of an apprenticeship with renowned master glass sculptor Pino Signoretto. The maestro ignored him for a month, while Caleb attentively sketched his work and tried not to get in the way. Eventually an apprenticeship evolved. Caleb spent two years in the Muranese studio with the glassmaker versatile enough to produce both enormous sculptures and delicate goblets. Here, he was encouraged to "steal with his eyes." Caleb's style shows the influence of his early tutor, coupled with an unabashed passion for the medium. "The transparency and fluidity of the material makes it unique," he says. "I always start with an idea, but have learned to remain flexible to allow for the natural qualities of the glass".

Caleb returned to Southern California in 1999 and constructed his own Italian-style studio. From furnace heights and bench design, to a system where each piece is created closely with a team of assistants, his methods reflect his Muranese immersion. Loris Zanon, Pino Signoretto's master coldworker, traveled from Murano to guide the construction of Caleb's coldshop and pass on the techniques of glass carving and polishing. From the Scandinavian glass tradition, Caleb has developed an affection for simple forms, taking advantage of gravity and centrifugal force in design. By pairing these approaches to glassmaking, he has developed a signature aesthetic that reflects the evolved detail of the Muranese and balance and restraint of the Scandinavians. Caleb continues to invite international glass workers to his studio to share their techniques with the next generation of glass artists. His work exhibits internationally and is featured in galleries around the world.

# carmen salazar



While her husband has binged on glass with a singular focus, his wife and partner, Carmen Salazar, has sipped from many ponds. Sculptor, metalworker, architect, botanist, and scavenger. Carmen is a curious hybrid of urban and rural. She brings the influence of many streams to her work in the glass shop. She is a recipe that calls for equal parts concrete and pasture, glass and steel and rough-hewn beams. Carmen grew up shuttling between Washington DC and the family farm in Augusta, West Virginia. In college, she began to cultivate a love for metal, glass, and the vegetal world. Carmen left the Rhode Island School of Design with a BFA in sculpture and art history, but also a peripatetic interest in reshaping the larger natural world.

In 1997 she drove to San Francisco where she spent two years working for a land artist, metal sculptors, horticulturalists, and glass blowers. In 1999 she moved to Orange County to help Caleb build his first shop. "I thought I was just going down for a month or so" she says, "but here we are, a decade later." The intersection of her diverse interests led her to the Southern California Institute of Architecture in 2001. After receiving her masters in architecture at SCI-Arc in Los Angeles, Carmen worked in the high end residential realm and then on the design team for a large scale public park. With her skills in architecture, interior and landscape design, the pair have embarked on an aesthetic leap forward. They are now executing large scale custom projects and installations while maintaining the studio's carefully cultivated quality and visual signature. "Glass and the living world have a lot in common. They are both as fickle as they are strong. It is this element of the unknown that inspires me in both mediums." says Carmen, "Caleb always looks like he has a tinge of fear when I start experimenting in the studio, but someone's gotta rock the boat."

# banded orb pendants

## description:

These striking pieces draw inspiration from the rich hues and undulating topography of Southern California. Alternating layers of opaque and transparent colors are applied to clear glass. Overlaps create opportunities for new colors to be formed, which adds to the depth of the pieces. The intense color is then complimented by the simple shape. Hand blown and shaped in lead free crystal. Designed by Caleb Siemon. Made in California. Signed.

## specifications:

- dimensions: 9" X 9"
- line voltage or LED
- 40watt incandescent maximum
- light assembly and canopy included
- Lamping included
  - medium base G25 white 40watt
  - or 2700k dimmable 200 lumen LED

## finish options:

- black or white cord
- 6' included (custom lengths available)
- canopies and hardware available in:



satin nickel    polished nickel    dark bronze

## color options:



amethyst  
25-44-52



stone  
25-44-122



scarlet  
25-44-54



mustard  
25-44-120



moss  
25-44-121



cranberry  
25-44-41



aqua  
25-44-51



amber  
25-44-53

\*Each piece is handmade: dimensions may vary slightly. Lights are not UL listed unless requested at the time of order.\*



banded orb pendants  
siemon & salazar

# lattimo pendants

## description:

This grouping is a variation of the banded line. The name refers to the Italian technique of lattimo or milk glass. These pieces focus on their forms rather than their color. Two opaque swathes of color are wrapped around a clear crystal bubble. This line is currently made in a white and ivory combination in multiple sizes and a selection of refined silhouettes. Hand blown and shaped in lead free crystal. Designed by Caleb Siemon. Made in California. Signed.

## specifications:

- line voltage or LED
- 40watt incandescent maximum
- light assembly and canopy included
- Lamping included
  - medium base G25 white 40watt
  - or 2700k dimmable 200 lumen LED

## finish options:

- black or white cord
- 6' included (custom lengths available)
- canopies and hardware available in:



## shape and size options:



teardrop pendant

large 23-12-19  
13" T x 9" W  
line voltage

small 23-12-19S  
10.5" T x 5.5" W  
line voltage



droplet pendant

large 23-24-19  
8" T x 10" W  
line voltage

small 23-24-19S  
7.5" T x 7.5" W  
line voltage

\*Each piece is handmade: dimensions may vary slightly. Lights are not UL listed unless requested at the time of order.\*



**lattimo pendants**  
**siemon & salazar**

# bubble pendants

## description:

These works continue the language of contrast of the lattimo and banded lines but use with a swath of textured whipped glass. This is then paired with a selection of soft colors and simple forms to create a piece of complexity and depth. Designed by Caleb Siemon + Carmen Salazar. Made of lead free crystal in California. Signed.

## specifications:

- dimensions: 9" X 9"
- line voltage or LED
- 40watt incandescent maximum
- light assembly and canopy included
- Lamping included
  - medium base G25 white 40watt
  - or 2700k dimmable 200 lumen LED

## finish options:

black or white cord

-6' included (custom lengths available)

canopies and hardware available in:



## color options:



steel blue cone  
30-49-134  
12" T x 6" W



steel blue ellipse  
30-15-134  
7" T x 9" W

\*Each piece is handmade: dimensions may vary slightly. Lights are not UL listed unless requested at the time of order.\*



steel blue bubble pendant  
siemon & salazar

# thick pendants

## description:

This series revels in the material. These thick crystal pieces focus on the way glass forms and light play with each other. Unique light refractions animate any surface nearby. The glass is manipulated through a variety of methods to create forms that range from the organic to the industrial. Hand blown and shaped in lead free crystal. Designed by Caleb Siemon + Carmen Salazar. Made in California. Signed.

## specifications:

- dimensions: 9" X 9"
- line voltage or LED
- 40watt incandescent maximum
- light assembly and canopy included
- Lamping included

Medium Base 25watt T-10 C8 Filament Clear Tube  
or Medium Base 25watt G-16 1/2-Clear Globe  
or 2700k dimmable 200 lumen LED

## finish options:

finished pipe or cable

- 6' cable included (custom lengths available)
- canopies and hardware available in:



satin  
nickel

polished  
nickel

dark  
bronze

## shape options:



urchin  
6" T X 7" W  
24-59-48



unicorn  
9" T X 5" W  
24-53-48



rotelle  
6" T X 7" W  
24-54-48



barnacle  
9" T X 5" W  
24-58-48

\*Each piece is handmade: dimensions may vary slightly. Lights are not UL listed unless requested at the time of order.\*



urchin pendant  
siemon & salazar

# happy kiss lights

## description:

These works play with the reflective and malleable qualities of glass. This line consists of heavy thick-walled pieces, which are hand manipulated to create a creased and singularly individual form for each piece. The works are either blown in solid clear crystal or use the Italian technique of 'sommerso' or encased color. Inspired by the the happy vase line, the kiss lights take advantage of the thickness and brilliance of our crystal to create a light with unending refractions. Designed by Caleb Siemon + Carmen Salazar. Made in California. Signed.

## specifications:

- dimensions: 4" T X 4" W
- low voltage halogen pendant
- 35watt maximum
- light assembly + 6' cord included
- Lamping Included-
- 20watt GY6.35 Bi-Pin halogen bulb
- canopy and transformer available

## finish options:

- satin nickel or bronze cord
- 6' included (custom lengths available)



satin  
nickel

dark  
bronze



lime green  
24-56-89

## color options:



steel grey  
24-56-88



aubergine  
24-56-91



clear  
24-56-48



sargasso  
24-56-90



amber  
24-56-126



gold topaz  
24-56-92



opaline  
24-56-101

\*Each piece is handmade: dimensions may vary slightly. Lights are not UL listed unless requested at the time of order.\*



happy kiss  
siemon & salazar

# cumulo pendants

## description:

These pieces use dollops of glass over a central core. The hot bits are blown out to diffuse the color and create a bulbous cloudlike shape. Designed by Caleb Siemon + Carmen Salazar. Made in California. Signed.

## specifications:

- dimensions: 6" T X 6" W
- low voltage halogen pendant
- 35watt maximum-light assembly and 6' cord included
- Lamping Included-
- 20watt GY6.35 Bi-Pin halogen bulb
- UL canopy and transformer available

## finish options

- satin nickel or bronze components
- 6' included (custom lengths available)



satin  
nickel

dark  
bronze



**black cumulo light**

31-68-149  
6" T x 6" W



lit



**alabaster cumulo light**

31-68-135  
6" T x 6" W



lit



**oxblood cumulo light**

31-68-150  
6" T x 6" W



lit

\*Each piece is handmade: dimensions may vary slightly. Lights are not UL listed unless requested at the time of order.\*



oxblood cumulo pendant  
siemon & salazar

# chaos wrap pendants

## description:

These pieces use a chaos wrap of white over clear crystal or clear over gold or silver leaf. They are elegant and playful at the same time. Silver pieces will patina. Handblown and shaped in lead free crystal. Designed by Caleb Siemon + Carmen Salazar. Made in California. Signed.

## specifications:

- dimensions: 5.5" T X 5" W
- low voltage halogen pendant
- 35watt maximum
- light assembly and 6' cord included
- Lamping Included-  
20watt GY6.35 Bi-Pin halogen bulb
- UL canopy and transformer available

## finish options:

satin nickel or bronze components  
-6' included (custom lengths available)



satin  
nickel

dark  
bronze



**duro chaos wrap pendant**

31-19-147  
5.5" T x 5" W



**24kt gold chaos wrap pendant**

31-19-143  
5.5" T x 5" W



**sterling silver chaos wrap pendant**

31-19-144  
5.5" T x 5" W

\*Each piece is handmade: dimensions may vary slightly. Lights are not UL listed unless requested at the time of order.\*



siemon & salazar

# gong pendants

## description:

The gong lights were designed to cast a directional light downwards without glare. The lights are as functional as they are beautiful. The gong pendants use layers of silver or gold leaf fused to the glass. The simple forms change dramatically when the lights are turned on. Tooling marks become visible and infuse the lights with patterning. Silver will patina. All Pendants are handblown and shaped in lead free crystal. Designed by Caleb Siemon + Carmen Salazar. Made in California. Signed.

## specifications:

- low voltage halogen pendant
- 35watt maximum-light assembly and 6' cord included
- Lamping Included-
- 20watt GY6.35 Bi-Pin halogen bulb
- UL canopy and transformer available

## finish options:

- satin nickel or bronze components
- 6' included (custom lengths available)



satin  
nickel

dark  
bronze



lit

**silver short gong light**

34-25-153  
6.5" T x 4" W



lit

**silver long gong light**

34-03-153  
9" T x 3" W



lit

**gold long gong light**

34-03-131  
9" T x 3" W



lit

**gold short gong light**

34-25-131  
6.5" T x 4" W

\*Each piece is handmade: dimensions may vary slightly. Lights are not UL listed unless requested at the time of order.\*



silver short gong pendant  
siemon & salazar

## small thick pendants

### description:

These lights use precious metals, whipped glass or texture to create unique projected patterns. Handblown and shaped in lead free crystal. Designed by Caleb Siemon + Carmen Salazar. Made in California. Signed.

### specifications:

- low voltage halogen pendant
- 35watt maximum-light assembly and 6' cord included
- Lamping Included-
- 20watt GY6.35 Bi-Pin halogen bulb
- UL canopy and transformer available

### finish options:

satin nickel or bronze components  
-6' included (custom lengths available)



satin  
nickel

dark  
bronze



**clear barnacle light**

24-58-48XS  
7" T x 5" W



**orb bubble light**

24-44-101XS  
4.5" T x 4.5" W



**square bubble light**

24-57-101XS  
8" T x 3.5" W



**gold barnacle light**

24-58-143XS  
7" T x 5" W

\*Each piece is handmade: dimensions may vary slightly. Lights are not UL listed unless requested at the time of order.\*



clear square bubble pendant  
siemon & salazar

# elbow sconces

## description:

This series of wall sconces are classically inspired. Scaled versions of our pendants hang from elegant metal armatures. The proximity of the pendant to the wall allows for each piece's unique light pattern to be magnified. They are available in a variety of finishes and shapes. Hand blown and shaped in lead free crystal. Designed by Caleb Siemon + Carmen Salazar. Made in California. Signed.

## specifications:

line voltage sconce

-40watt incandescent maximum

-Lamping included-(candleabra base)

25watt T-6 1/2 Clear bulb

## finish options:



satin nickel   polished nickel   dark bronze   polished brass

## color options:



round happy  
8"OAH X 5"W  
27-44-48



bubble square  
10"OAH X 4.5"W  
27-57-129



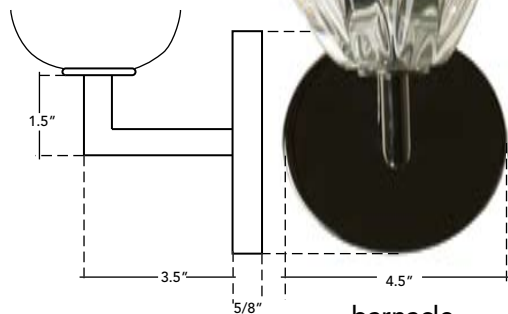
bronze square  
10"OAH X 4.5"W  
27-57-128



opal square  
10"OAH X 4.5"W  
27-57-101



round bubble  
8"OAH X 5"W  
27-44-101



barnacle  
10"OAH X 4.5"W  
27-58-48

\*Each piece is handmade: dimensions may vary slightly. Lights are not UL listed unless requested at the time of order.\*



clear happy ball sconce  
siemon & salazar

# happy ball lamp

## description:

The happy lamp plays with the reflective and malleable qualities of glass. This lamp consists of heavy thick-walled pieces, which are hand manipulated to create a creased and singularly individual form for each piece. The balls are either blown in solid clear crystal or use the Italian technique of 'sommerso' or encased color. The ball lamp is available in all happy kiss color ways. Height is customizable. The happy lamps are all wired for line voltage. Designed by Caleb Siemon + Carmen Salazar. Made in California. Signed.

## specifications:

ball dimensions: 5" T x 7" W

-O.A.H. depends on number of balls

line voltage lamp

75watt maximum

light assembly and shade included

## finish options:

base and hardware available in:



satin polished dark polished  
nickel nickel bronze brass

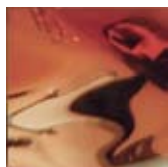


(shown at approx. 34" OAH)  
26-70-48  
clear

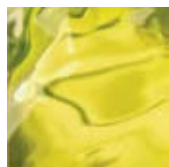
## color options:



steel grey  
26-70-88



aubergine  
26-70-91



lime  
26-70-89



sargasso  
26-70-90



amber  
26-70-126



gold topaz  
26-70-92



opaline  
26-70-101

\*Each piece is handmade: dimensions may vary slightly. Lights are not UL listed unless requested at the time of order.\*



opal happy lamp  
siemon & salazar

# growlight

The growlight was conceived for the individual who is limited by light, space, or temperatures outside but desires a vegetal element in their world nevertheless. The lights are microcosms complete with their own suns. Water does need to be applied to maintain maximum health. The lights are especially suited for tropicals, epiphytes, fresh herbs, and succulents. A swath of whipped glass clouds the bulb and diffuses the light. Each one is unique. Hand blown in lead free crystal. Designed by Carmen Salazar. Made in California.

## specifications

- line voltage or LED pendant lamp or wall sconce (table and floor lamp armatures also available)
- 40watt line voltage maximum- use full spectrum growlight only (one included) or 3000k LED
- plug or hard wired canopy option
- base planting medium included with planting instructions
- weight:
  - unplanted- 10lbs
  - planted- 15-30lbs
- interior or exterior damp light option
- custom sizes and colors available



\*Each piece is handmade: dimensions may vary slightly. Lights are not UL listed unless requested at the time of order.\*



siemon & salazar

